

Ratio= drug area/IS area

Measured conc.= (ratio/0.00366)-(+0.0355)

Function is  $Y = 0.00366X + 0.0355$  (R= 0.9987 )

p<0.05

**Table 32: Raw data of the standard curve with regards to correlation, slope, R<sup>2</sup>, and intercept for day three for candesartan**

Correlation (R)	Slope	R <sup>2</sup>	intercept
0.9987	0.00366	0.9974	+0.0355

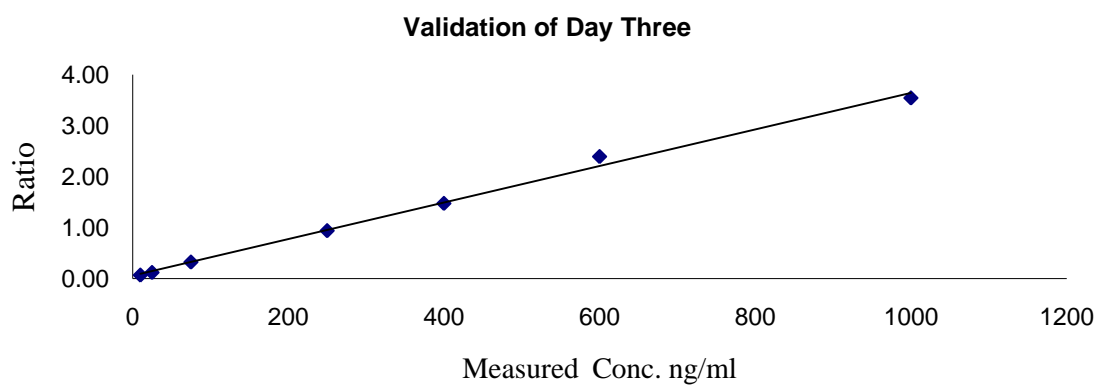


Figure 5: The plot of calibration curve levels against their analytical response, in day three validation for candesartan.